



PROFESSIONAL NEON ADVERTISING

The power of Advertising Industry

P R O F I L E

• DESIGN • MANUFACTURE • INSTALL
SOLUTIONS ALL IN ONE PLACE

FENCING & CONSTRUCTION
HORDING





Professional Neon Advertisign - Fencing Panel supplier in UAE is based in Sharjah has an excellent fabrication facility of temporary construction site hoarding panel fencing where professional Neon in house production support of fencing panels.

Professional Neon offer a wide range of color for its construction site fencing and several types of the Fence. Like. continuance fence, Corrugated fence , Hording type Fence , Chanin link fence... etc.

Professional Neon Advertisign, specializes in outdoor and indoor advertising. We are factory based signage making company doing all kinds of signage under one roof. We can offer best quality products and servieds with affordable prices. We have skilled and well trained production staffers and our equipment are the latest and sophisticated technology available in the market today

We have machines like large format digital printer, CNC Router machine, Plotting/Drawing machine, sand blasting machine, Waterjet Cutting machine and other equipment used for manufacturing of signs. signs. Signage creates a first impression of how good the company is, thus the need for best and quality signage that stands out is very important . We are committed to deliver signs and advertisements that make your company shines among others.

FENCE PROJECTS



AZIZI-Dubai Health Care City- 3m & 4m size



P R O F I L E

• DESIGN • MANUFACTURE • INSTALL

FENCE PROJECTS



AZIZI-Dubai Health Care City- 3m GREEN FENCE



P R O F I L E

• DESIGN • MANUFACTURE • INSTALL

FENCE PROJECTS



Middle East Foundation
3m high fence - Dubai (Marina)



Middle East Foundation
2m (fence panel-Continuance fence fix on wall- Dubai (Marina)



P R O F I L E

• DESIGN • MANUFACTURE • INSTALL

FENCE PROJECTS



Middle East Foundation - Dubai (Marina)



Media City - Dubai



Deyaar - Dubai



Media City - Dubai



Media City - Dubai



P R O F I L E

• DESIGN • MANUFACTURE • INSTALL

FENCE PROJECTS



KOA- AL BARARI - 3m (H)



P R O F I L E

• DESIGN • MANUFACTURE • INSTALL

CONTINUANCE FENCING



PROFESSIONAL NEON Advertising CONTINUANCE FENCING Technical Specification

Corrugated Sheet:

GI Galvanized pre painted Corrugated Sheet Profile 35/200
Polyester coated Ral9002 offwhite color Top & Bottom
Ral 7035 Gray Primer color
Details of Material: ASTM A653,ZINC: 120 TO ZINC 275 GSM,
top coat 5+20 Micron and Bottom coat 5 TO 7 Micron
Thickness: 0.5 mm

GI Galvanized U Channel :

GI Galvanized Mill Finish U Channel : 40 mm(w) x 40mm(H) X 1.2 mm Thk
Details Of Material: ASTM A653, ZINC 120 TO ZINC 275 GSM
Standard: ASTM
Grade: SGCC, SGCH, SGCE, SPCG, DB51D
Zinc Coating : 20 GSM to 280 GSM

GI Post Base / GI Pipe

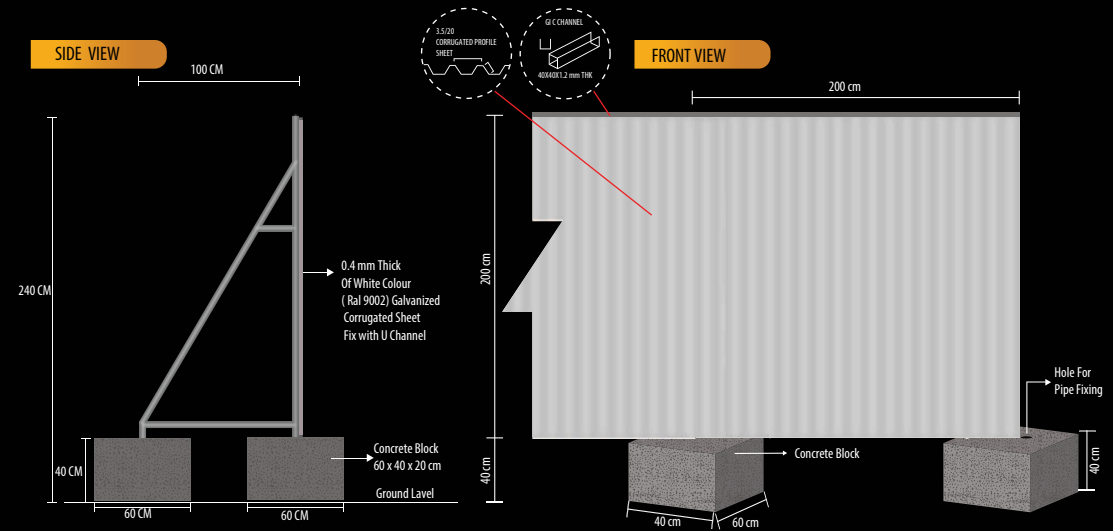
The Sides of Each Fencing Panel is Supported by Galvanized
ERW pipes of 1-1/4" Thickness: 1.2 mm
Detail Of Material: ASTM A 653 Zinc: 120 to Zinc 275 GSM
Standard : ASTM
Grade: SGCC, SGCH, SGCE, SPCG, DB51D
Zinc Coating: 20 GSM to 280 GSM

Back Support Pipe Clamp

Diagonal Support Pipe/ Back support pipe clamp HDG
(Hot Dip Galvanized Finished) with 55 o 66 Zink Coating Micron
with 2.5 mm Thick.
Details of Material: ASTM A 653, Zinc: 120 to Zinc 275 GSM.
Standard: ASTM
Grade: SGCC, SGCH, SGCE, SPCG, DB51D
Zinc Coating: 20 GSM to 280 GSM

Concrete Blocks

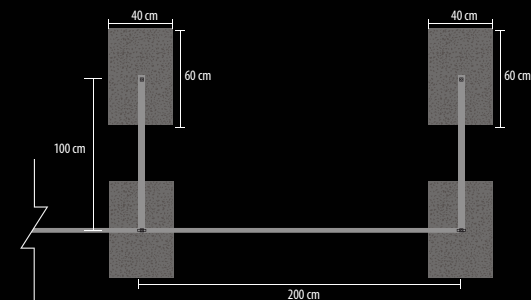
The Fencing Panel are erected on concrete blocks of 60cm x 40cm x 20cm
Details of Materials: RCC (Concrete Cement Reinforcement)
Weight of Each Block: 70 to 80 KG
Type: For Post Best (Hole One Blocks) for Diagonal Support (Nut One Block)



PHOTO



TOP VIEW



P R O F I L E

• DESIGN • MANUFACTURE • INSTALL

CONTINUANCE FENCING



Media City - Dubai



P R O F I L E

• DESIGN • MANUFACTURE • INSTALL

CORRUGATED FENCING - WITH BANNER (HOARDING TYPE)



Habtoor Leighton Group - Abu Dhabi



P R O F I L E

• DESIGN • MANUFACTURE • INSTALL

CORRUGATED FENCING - WITH BANNER (HOARDING TYPE)



PROFESSIONAL NEON Advertising CORRUGATED FENCING with BANNER (HOARDING TYPE) Technical Specification

Corrugated Sheet:

GI Galvanized pre painted Corrugated Sheet Profile 35/200
Polyester coated Ral9002 offwhite color Top & Bottom
Ral 7035 Gray Primer color
Details of Material: ASTM A653, ZINC: 120 TO ZINC 275 GSM,
top coat 5+20 Micron and Bottom coat 5 TO 7 Micron
Thickness: 0.3 mm to 0.7 mm

GI Galvanized U Channel :

GI Galvanized Mill Finish U Channel : 40 mm(w) x 40mm(H) X 1.2 mm Thk
Details Of Material: ASTM A653, ZINC 120 TO ZINC 275 GSM
Zinc Coating : 20 GSM to 280 GSM

GI Post Base / GI Pipe

The Sides of Each Fencing Panel is Supported by Galvanized
ERW pipes of 1-1/4" Thickness: 1.2 mm
Detail Of Material: ASTM A 653 Zinc: 120 to Zinc 275 GSM
Standard : ASTM
Grade: SGCC,SGCH,SGCE,SPCG,DB51D
Zinc Coating: 20 GSM to 280 GSM

Back Support Pipe Clamp

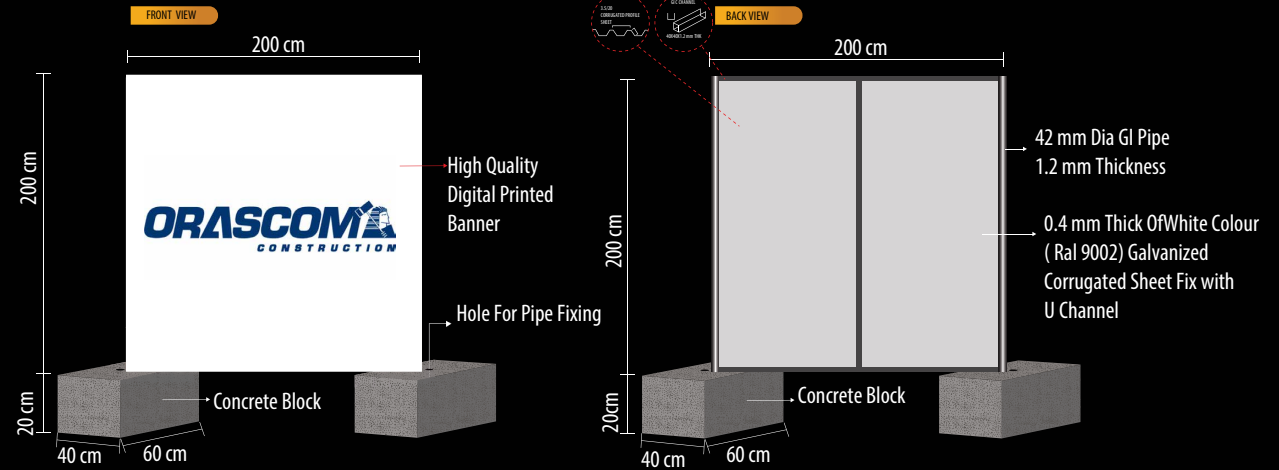
Diagonal Support Pipe/ Back support pipe clamp HDG
(Hot Dip Galvanized Finished) with 55 o 66 Zink Coating Micron
with 2.5 mm Thick.
Details of Material: ASTM A 653, Zinc: 120 to Zinc 275 GSM.
Standard: ASTM
Grade: SGCC,SGCH,SGCE,SPCG,DB51D
Zinc Coating: 20 GSM to 280 GSM

Concrete Blocks

The Fencing Panel are erected on concrete blocks of 60cm x 40cm x 20cm
Details of Materials: RCC (Concrete Cement Reinforcement)
Weight of Each Block: 70 to 80 KG
Type: For Post Best (Hole One Blocks) for Diagonal Support (Nut One Block)

Banner

High quality digital printed banner fix on fence face.
banner specification :
SPF - 15 (Frontlit) Korean brand
Fabric : 1000D X 1000D
Weight : 510 g/sm
Width: 80cm~ 220 cm, 320cm.~530cm
Surface Finish : Matte, Glossy



P R O F I L E

• DESIGN • MANUFACTURE • INSTALL

CORRUGATED FENCE



P R O F I L E

• DESIGN • MANUFACTURE • INSTALL

CHAINLINK FENCEING



PROFESSIONAL NEON Advertising CHAINLINK FENCING Technical Specification

Hight :

2.5 m or 3.65/3m overoll fabric Hight

Fabric

Chain link mesh , 2.5/3.55 mm mesh x 9/11 gauge (3.4mm)
to desired height. Manufactured from the
highest quality galvanized wire or PVC coated,

Line Posts :

The Fencing Post by Galvanized /Powder Coated
ERW Pipes of 1-1/4" Thickness : 1.2 mm
Detail Of Material : ASTM A653, Zinc 275 GSM

Bracing Pipe/Stretcher Bar Support Pipe

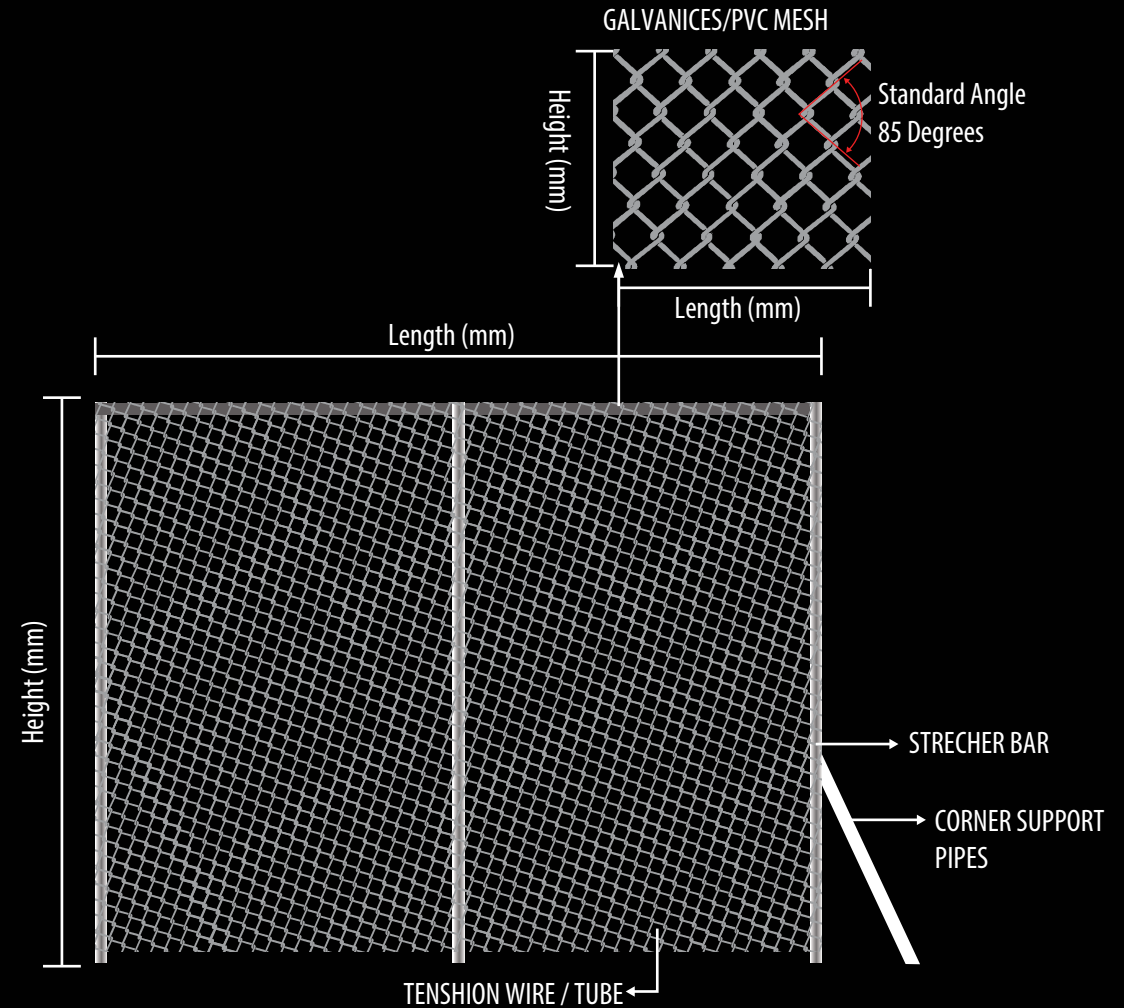
3/4" - 1.2 mm Bracing pipe, will be Galvanized / Powder Coated.
Flat bar 25x5 weaved through end mesh and secured to the Terminal post.

Stirrup Wire (Line to post) / The Wire (Line to Fabric)

GI wire PVC coated Finished coated wire 3 mm, GI Wire core 1.6mm
GI wire PVC coated. Finished coated wire 1.6/2.6mm Dia
To secure fence fabric to Line wire

Accessories

GI PVC coated clip, tension & bracing / bands, tension flat bar



P R O F I L E

• DESIGN • MANUFACTURE • INSTALL

CHAINLINK FENCEING



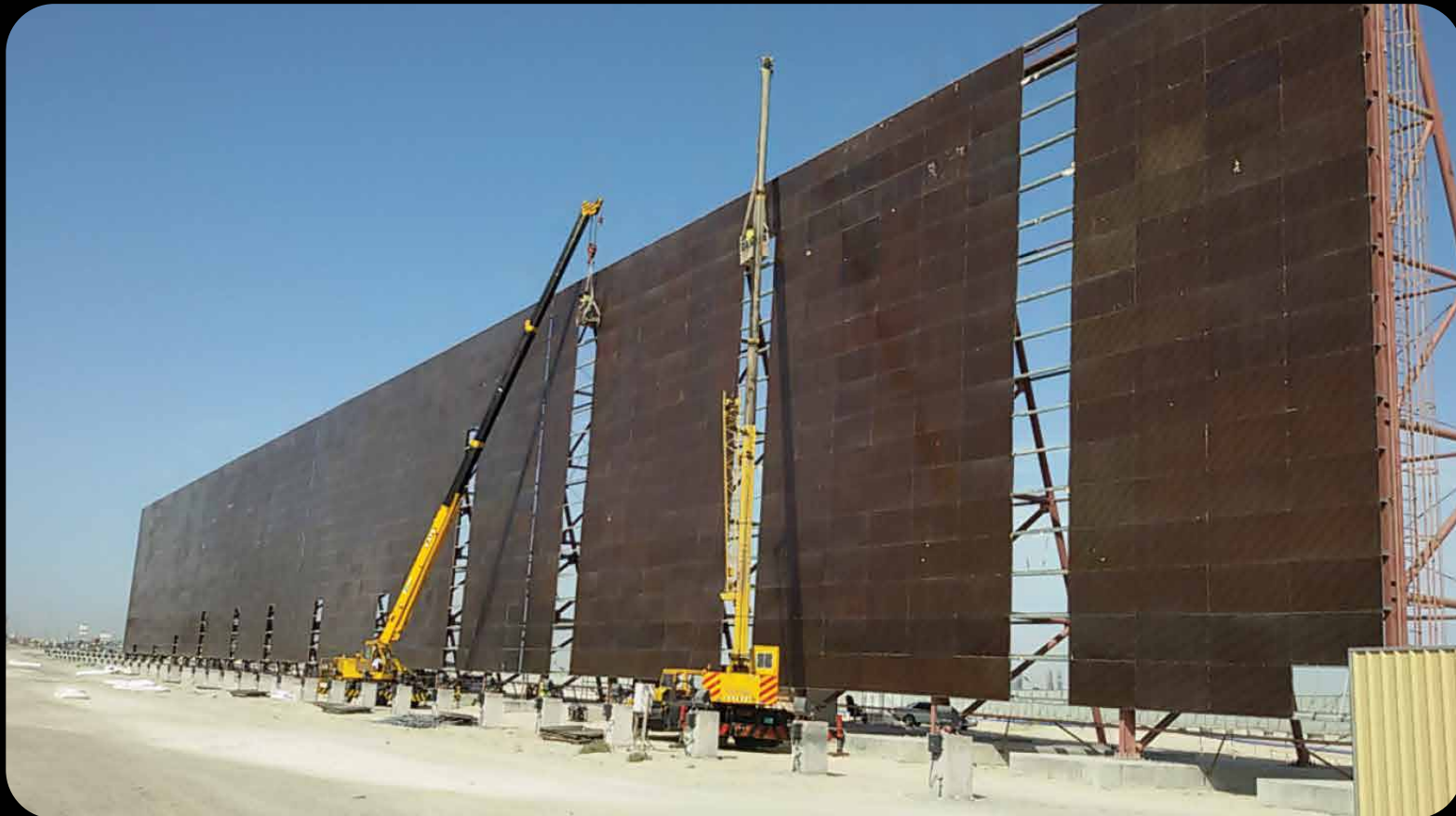
P R O F I L E

• DESIGN • MANUFACTURE • INSTALL

HOARDING



Meydan Sobaha - Dubai (Al Khail) 200m



P R O F I L E

• DESIGN • MANUFACTURE • INSTALL

HOARDING



Meydan Sobaha - Dubai (Al Khail) 200m



P R O F I L E

• DESIGN • MANUFACTURE • INSTALL

HOARDING



Meydan Sobaha - Dubai (Al Khail) 200m



P R O F I L E

• DESIGN • MANUFACTURE • INSTALL

HOARDING



Al Qudra Real Estate - Abu Dhabi



Hydra - Abu Dhabi



P R O F I L E

• DESIGN • MANUFACTURE • INSTALL

HOARDING

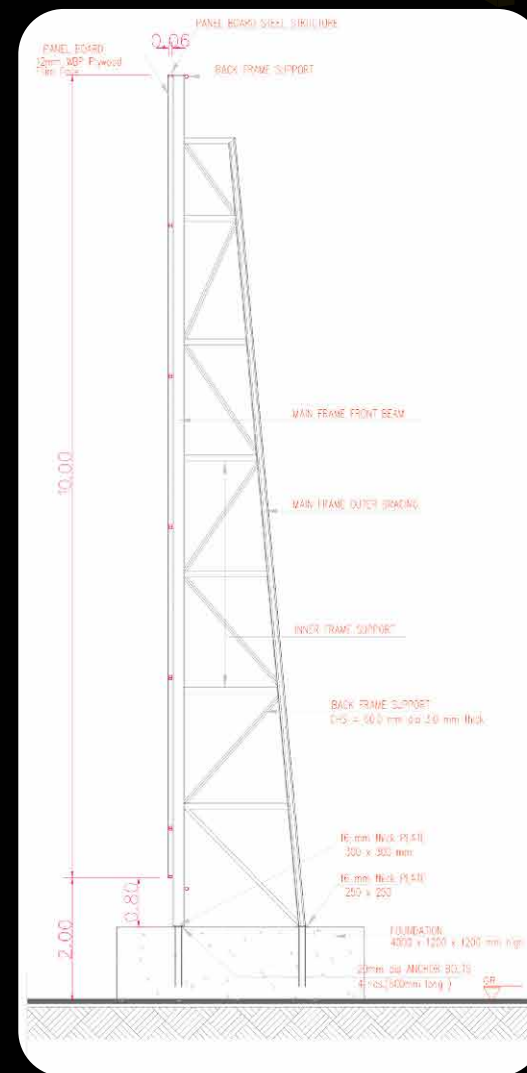
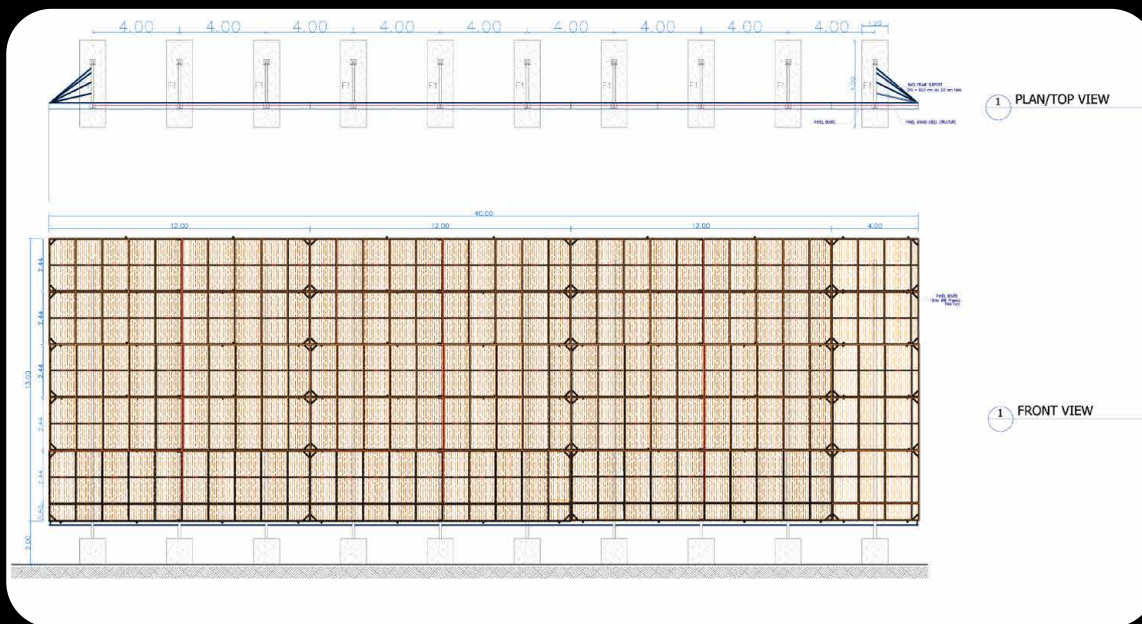


PROFESSIONAL NEON Advertising HOARDING Technical Specification

We are trusted as one of the distinguished manufacturer and supplier of quality approved Banner Hoarding.

The offered Hoarding is designed using quality tested raw material with industry norms, so as to deliver qualitative product at clients end.

Considering varied requirements of our clients, we offer this hoarding in different designs and sizes.



P R O F I L E

• DESIGN • MANUFACTURE • INSTALL

FENCE GATE



P R O F I L E

• DESIGN • MANUFACTURE • INSTALL



We will be happy to work with you

Please Contact Us :-

Tel: +971 6 544 2282 Fax: +971 6 544 2055 P.O.Box: 33639
info@professionalneon.com www.professionalneon.com
Emirates Industrial City. Al Sajaa Industrial Area - Sharjah, U.A.E.

P R O F I L E

DESIGN MANUFACTURE INSTALL